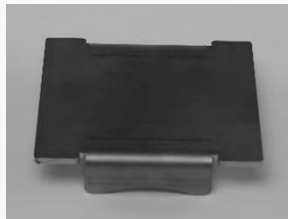


# SINGLE SHOOT MANIFOLD INSTALLATION MANUAL



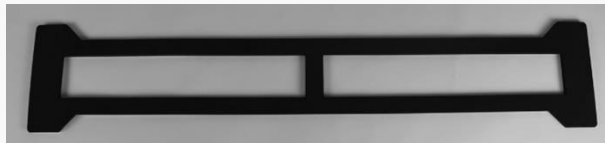
**Clamps (16)**



**Filler Plates (4)**



**Rubber Caps and  
Hose Clamps (8)**



**Plenum Gasket (1)**

## SINGLE SHOOT MANIFOLD HARDWARE KIT

**$\frac{3}{8}$ " x  $1\frac{1}{4}$ " Carriage Bolts (6)**



**Nylon Washers (6)**



**$\frac{3}{8}$ " Nyloc Flange Nuts (6)**



**Note: All hardware must have anti-seize applied to prevent binding.**

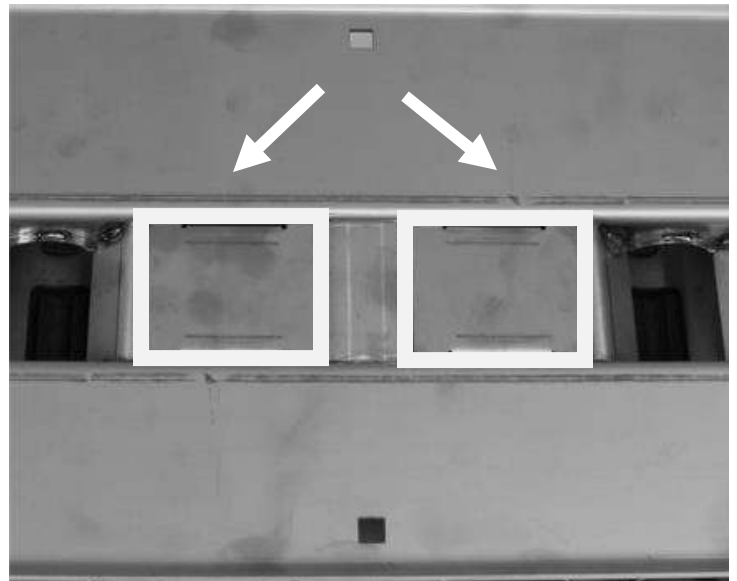
# Run Configuration

Included are the parts required to build any run style. There will be left over parts depending on what configuration is built.

1. Filler plates are used to prevent product from falling into the tube cavities. The below picture shows a 6 run setup.



**Optional:** To prevent dust from entering the run cavities, silicone should be applied to seal the filler plates. **Although this is not required, it is recommended.**



2. Rubber caps and hose clamps are included to cap off runs that are not used.



3. Install the provided gasket by removing the protective sheet and adhering the gasket to the manifold.



## Manifold Installation

- Using the hardware provided, bolt the manifold to the meter housing using the nylon washer as a spacer between the manifold and the meter housing.



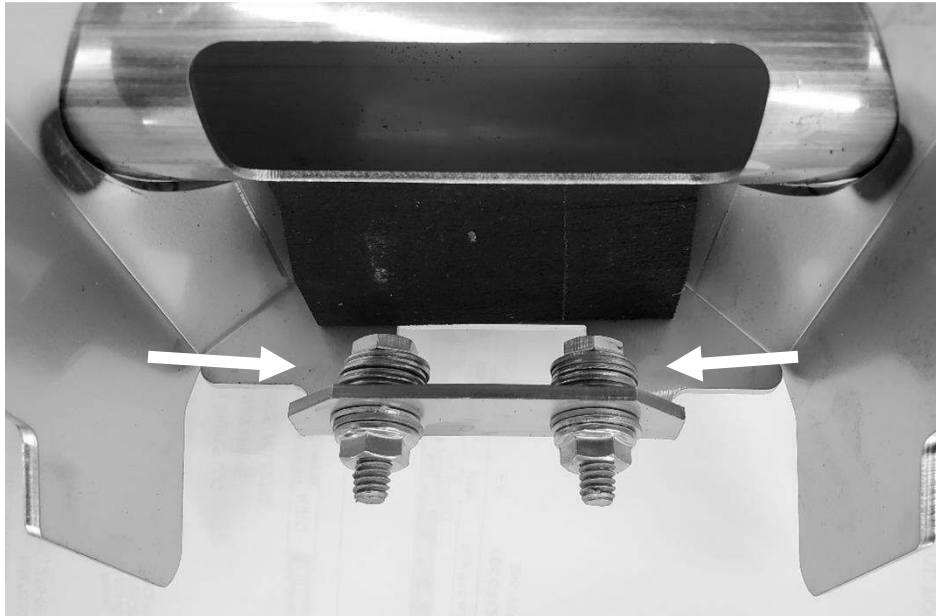
**Note: All hardware must have anti-seize applied to prevent binding.**

- Once bolted to the meter housing, attach the tubes using the clamps provided.



## Manifold Adjustment

6. The Manifold Adjustment Tab has washers on both sides for any adjustments that are needed. Add or remove washers from the Adjustment Tab to modify clean out door tension. Additional washers are located on the underside of the Adjustment Tab if needed.



7. The manifold latches provide additional adjustment capability. If needed, adjust the latch bolt and tighten the set nut shown in the picture below.

